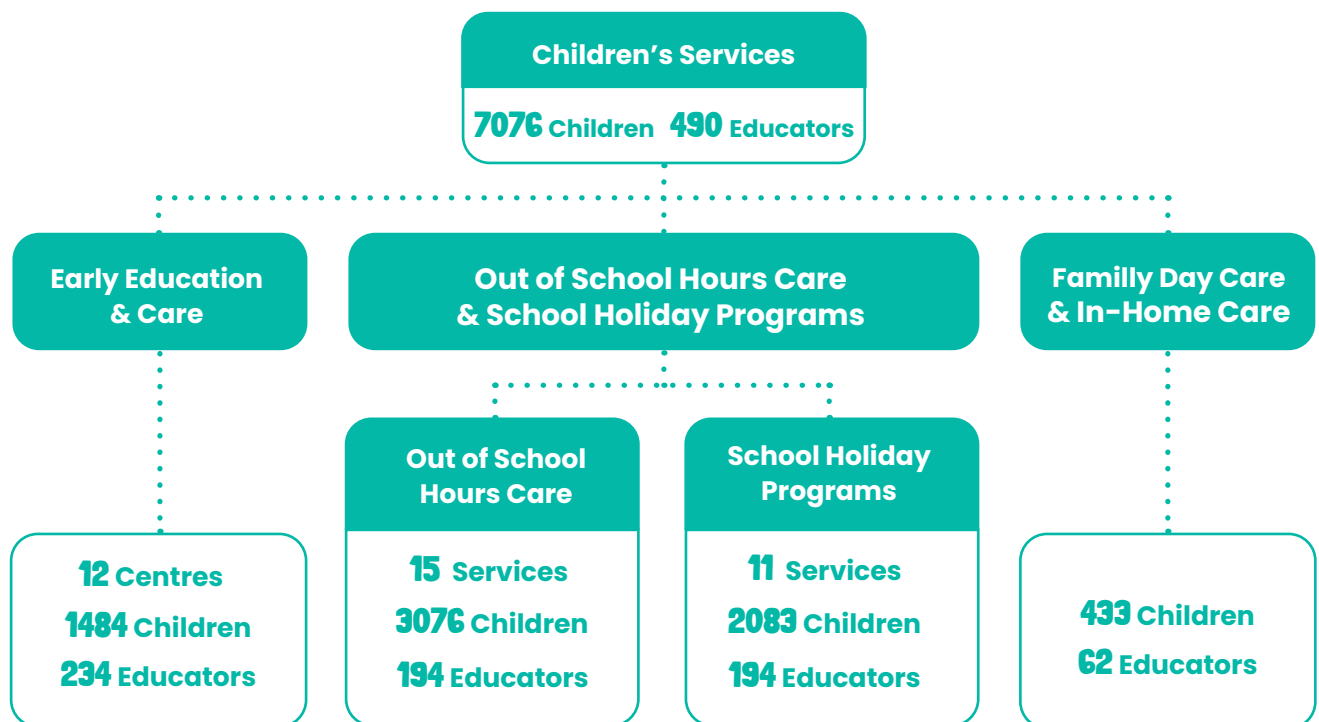


2022 – 2023 ANNUAL REPORT HIGHLIGHTS

communities
atWork



CHILDREN'S SERVICES



We supported
66 children

to access two days of quality early childhood education through the 3-Year-Old Initiative



We supported
64 vulnerable children

to access **3,214 days** of early childhood education through funding the Children's Services Program



26 educators and up to 90 children

attended 5 playgroups each week

COMMUNITY SERVICES

COMMUNITY PANTRIES



We purchased

56,640 kgs food

from Foodbank to stock
our pantries

That's

29% more pallets
than last year

40% ↑

in new pantry members
seeking food assistance

1,961

people made

116,993

shops for food and essential items



Christmas Appeal

People donated

2,759 **2,060**

gifts

food items

directly to us



People donated

8,107 **2,462**

gifts

food items

from Pack the Bus fundraiser
(65% increase)



A total of

15,388

gifts and food
donations

(30% increase)



Organisations set up

72 giving
trees

50%

↑ in households
visiting our two
Christmas Caves



FOOD RESCUE



We collected

22 trolleys of food per week

from regular grocery donor businesses

*based on approx 50kgs/trolley

We saved

58,800 kgs

of food from going to land waste
through our Food Rescue service
(33% increase)



BEST DRESSED STORE



We saved

3,000 kgs of clothes

from going to landfill

by selling

15,000 items of clothes

through our

Best Dressed Store op shop

CRISIS SUPPORT

We helped

1,011 clients
with crisis support
4,755 times



REACH HOME

We provided housing for

70 adults and children

who were homeless / at risk of homelessness
(up from 34 last year)



DISABILITY AND SENIOR SERVICES

26 drivers

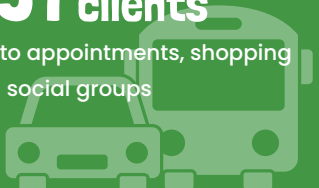
made

28,294 trips

to help

791 clients

get to appointments, shopping
and social groups



We provided

28,917 hours

of client support
benefiting

91 disability clients

(68% ↑ in hours from last year)



We spent

18,892 hours

providing **seniors clients** with

- Domestic Assistance
- Personal Care
- Individual Social Support
- Group Social Support



COMMUNITY DEVELOPMENT

Denman Open Day

We celebrated Denman
Village Community Centre's



1st
BIRTHDAY

with an Open Day to bring
the local community
together

The Men's Table

We supported
the development of

4 MEN'S
TABLES

to expand men's peer
support networks in
Canberra

Window into Wellness

We supported and delivered

11 A WINDOW INTO
WELLNESS
WORKSHOPS

to improve community
mental wellbeing

GALILEE SCHOOL



We opened our
Senior Secondary College Building
to provide learning spaces for our
Year 11 and 12 students at Kambah.

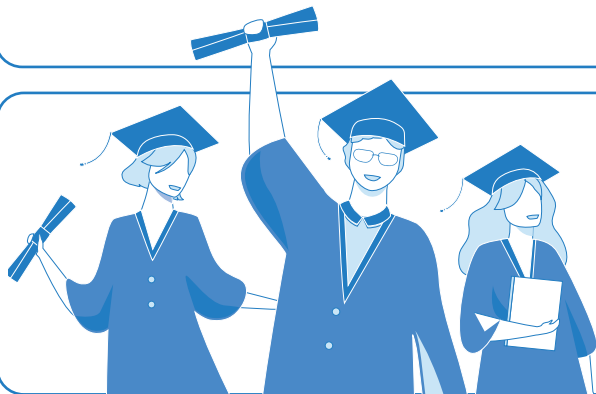


Student Success Rate

8% → 92%

rise in students finding pathway to
success after Year 10

(*since opening senior college)



In 2022 we celebrated

**OUR FIRST EVER
YEAR 12 GRADUATES**

CENTRE OF PROFESSIONAL LEARNING & EDUCATION (CPLE)

We won

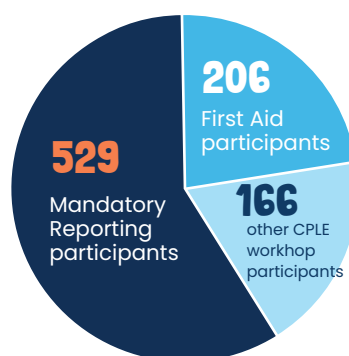
**Large Employer
of the Year**



**AT THE ACT TRAINING AWARDS
4TH YEAR IN A ROW**

Workshop Participants

(up from 558 total last year)



WORKSHOP TOPICS INCLUDED:

- Autism Awareness
- Key Word Signing
- Ngunawal Language
- Mental Wellbeing
- Gender Diversity
- Mandatory Reporting

SUSTAINABILITY

21 hybrid vehicles

will save

78,315 kgs

in CO² emissions

\$75,966

in fuel costs

(34,530 litres x \$2.20/l) over 3 years



RECONCILIATION

Second – highest donor

in Children's Ground national fundraiser

for disadvantaged First Nations children and
their families.

