

2024

ANNUAL REPORT



WHAT WE DO

Galilee School is a registered, independent secondary school designed to provide a supportive environment for disadvantaged young people in Years 7–12, who have struggled in mainstream environments because of the complex financial, social, emotional, or mental health challenges they face.

Our team of highly skilled educators, youth workers and support staff provide students with a quality education aligned with the Australian Curriculum.

Our Year 11 and 12 Senior Secondary College offers a boutique range of accredited (A) subjects that have been strategically identified to enable students to achieve their ACT (Year 12) Senior Secondary Certificate. This program aligns with the requirements of the ACT Board of Senior Secondary Studies (BSSS).

We also provide training and job-ready support to increase the education and employment opportunities for students transitioning to the workforce or to further education.

Our school sits across two campuses. The main campus is on a peaceful 200 hectare bushland setting in Kambah overlooking the Brindabella Mountains. The second campus is at Dixon Drive, Holder.

ACKNOWLEDGEMENT OF COUNTRY

We at Galilee School acknowledge and are grateful for the First Nations People of the Ngunnawal Country, as the traditional custodians of the country on which we work, learn and live. We recognise their continuing connection to land, water and community, and pay respect to Elders past, present and future.

CONTENTS

What Makes Us Special	1
Board Chair Report	2
Principal Report	3
Our Impact 2024	4
25th Anniversary Highlights	10
25 Years – Our Journey	12
Vocational Learning	14
End of Year Highlights	16
Satisfaction Surveys	18
Our Partners & Supporters	20
Supporter Stories	21
Supporter Opportunities.	22
Our Staff	24
Our Students	25
Galilee School Education Committee	26
Statement of Compliance	27
Taylah’s Story	28
About Communities at Work.	29

Front cover image by Rihanna, a Year 11 Galilee School student

WHAT MAKES US SPECIAL

Galilee School fills a unique niche in our local community by supporting the learning of teenagers who have struggled in mainstream school environments.

Here, at Galilee School, young people can find an alternate path to success. We offer them a second chance (or maybe their best chance) for success. They find a place where they belong, where they’re understood, and where they’re heard. A place where they can build a future they never thought possible.

We provide much more than just education:

- We create a flexible learning program tailored to each student’s needs.
- We specialise in smaller class sizes (seeking to maintain a 1 to 5 staff to student ratio).
- We help students develop their emotional and social skills.
- We focus on building close relationships with students and families.
- We provide authentic real-life training opportunities and job-ready support.
- Our Senior Secondary College provides a much-needed pathway for disadvantaged students to get a Year 12 Certificate.
- We support students in many areas outside their school life.
- Our students have a strong sense of connection with us; studies show this encourages healthy behaviours and academic success.
- We enable former students to stay connected with the school and give them help with career pathways and transition to work.

“ I’m not only alive because of you, but truly living.

– Rory, former student ”

“ My daughter is finding her place, her voice, her confidence and herself. Such a huge turnaround for her. So very, very grateful for a safe learning sanctuary.

– Parent ”

“ Finally, my child feels safe at school, and that there are teachers who care about his future and wellbeing. If it wasn’t for Galilee School, my child may not have stayed in school.

– Parent ”

BOARD CHAIR REPORT

ALAN GREENSLADE



I am proud of the work that Galilee School does in the Canberra community – it plays a vital role in contributing to Communities at Work's social purpose.

In 2024, the school proudly marked its 25th anniversary—a significant milestone that reflects its lasting contribution to the Canberra community and the growing need for such a service.

During 2024 we were reminded of the many underpinning partnerships that have supported Galilee School over its 25 years, including:

- Our membership of the Association of Independent Schools of the ACT, which supports our professional growth and sector connections.
- Our longstanding partnership with Lions Youth Haven at Kambah (we are their longest continuous tenant). This site remains central to our operations.
- The merger of Communities at Work and Galilee Inc in 2011, which has enabled the school to expand significantly.

In 2020, the Board decided to expand the school to include Years 11 and 12 to continue supporting students who had completed Year 10 but perhaps were not yet ready to find success in mainstream college settings. Three cohorts have now graduated, with enrolments exceeding expectations.

In 2024, we were proud to see two of our educational leaders recognised by the ACT Branch of the Australian Council of Educational Leaders (ACEL), underscoring the high-quality program of education provided throughout the school:

- Lisa Hivers, Head of Teaching and Learning, received an award for Excellence in Educational Leadership.
- Tim McNevin, Principal, was awarded an ACEL ACT Branch Fellowship.

We launched the South Canberra Community Markets in November in partnership with Lions Youth Haven – a significant example of community engagement. We are also planning our inaugural fundraising event, the Black Friday Ball, for November 2025.

The Communities at Work Board is the Approved Authority for Galilee School and governs the School through the Board Education Committee. I would like to thank Board members Joanne Garrison and Karen Curtis for their leadership on the Committee, and all Committee members for their significant contributions and valuable input during the year.

And, of course, the school's achievements would not be possible without the work of Tim McNevin, the school principal, his outstanding leadership team, and the staff of the school. Together, we look forward to the continuing impact the school will have in 2025 and for the next 25 years.

Alan Greenslade

PRINCIPAL REPORT

TIM McNEVIN



2024 was a year of encouragement and reflection as the whole school community celebrated 25 years of being a registered school in the ACT.

Galilee was established in 1986 and commenced its first ACT government-funded service in 1987: the Galilee Family Placement Scheme (GFPS), providing foster care for teenagers. The program grew into a full 0–18 years foster care service in the early 1990s and in 1999 was officially registered as a school.

Since merging with Communities at Work in 2011, the school has continued to grow, refine our model, and increase our social impact in the Canberra community.

Anniversary highlights in 2024 included:

- Our first-ever Open Day on 20 June, welcoming families, students, and education professionals from across the region.
- Our 25th Anniversary celebration on 12 September, honouring the many individuals who have supported the school over the years and highlighting the school's significant impact on former and current students.
- The official opening of the Galilee School Hospitality and Events Centre on 22 November.

We also commenced an exciting and valued new partnership with Outward Bound, giving our students access to challenging outdoor experiences with real impact. In addition, the implementation of our new Student Management System, Sentral, has significantly strengthened our ability to monitor and support each student throughout their journey.

Strong relationships—with families and support agencies, and between staff and students—remained a core focus in 2024.

Our staff are so critical to our success as a school. Without the collective efforts of our youth workers, teachers, Learning Support Assistants, our Community and Wellbeing Officer, and our Administration Team – along with the support of Communities at Work and the School's Executive Team – highlights don't happen, relationships don't get established, and young people struggle to find success.

Thank you to everyone who has contributed to Galilee School's success in 2024. We look forward to a positive future.

Tim McNevin

OUR IMPACT 2024

CAPITAL WORKS PROGRAM

On 22 November long-time supporter of our school, David Smith MP, Federal Member for Bean, officially opened the Galilee School Hospitality and Events Centre.

This Centre represents Stage 4A of the Kambah Campus Master Plan and is the first time we have constructed a specialist curriculum facility.

This project will enable us to vastly improve the delivery of our food studies curriculum to all year levels of the school, with particular emphasis on Years 11 and 12.

Food studies is a deeply integrated element of both the teaching and learning and the social development of the students. Food underpins so much of the social and emotional connectedness

of our school and provides students with important vocational and life skills to support their positive transition out of the school and through life.

We are very grateful for the valuable contributions of the Galilee School Capital Works Steering Group for providing guidance to the infrastructure program of the school – particularly Parbery Consulting, Purdon Planning, Munns Sly and Moore Architects and Total Project Construction.

Deep thanks also to the Australian Government, ACT Government and Communities at Work for their vital funding of this important initiative.

The continuing support of our partners means every young person can find the success that we know they are capable of.



POSITIVE RISK-TAKING

We were delighted to commence an exciting new partnership with Outward Bound, which gave our students the opportunity to step outside their comfort zone and engage in challenging outdoor experiences with real impact. Providing opportunities for healthy exploration and positive risk-taking helps young people adapt to the world and prepare for adulthood.



DEVELOPING BUSINESS SKILLS

Students took part in the Academy of Entrepreneurs *My First Business* program to gain invaluable insights and hands-on skills to start and run a real business. They explored business ideas, created products, planned their budgets, and learned how to promote and sell. On Market Day, they set up stalls and aimed to earn \$100 using their new skills.

By the end of the program, students had the knowledge, confidence, and entrepreneurial mindset to take their first steps in the business world. This year our students achieved excellent results from their business ideas and donated 50% of their profits to charity.

BUSINESS	PRODUCT	INCOME	CHARITY
Cupcake World	Homemade cupcakes	\$77	Palestinian Children's Relief Fund
Painting Life	Environmental artworks	\$90	Make a Wish Foundation
Chocolate and Caramel Popcorn	Popcorn	\$93	Leukemia Foundation
Panda Prints	3D printed fidgets & gadgets	\$240	Doctors Without Borders



CONNECTING THROUGH DOGS

Dogs Connect is an invaluable asset to our Galilee community, enriching the lives of both staff and students alike. Our therapy dog Halle has brought immense joy and positivity to our school and plays a pivotal role in helping students regulate their emotions. Her calming presence provides them with an additional outlet for connection. Halle also began trialing bus runs in the afternoons, offering students comfort and companionship during their journey home.



SHARING LIFE EXPERIENCES

We were delighted to welcome guest speakers from the Australian Defence Force to mentor our students and help them reflect on career pathways. Our speakers also gave invaluable insights into overcoming different life circumstances, the importance of perseverance, and building resilience through life, in relationships and work.

SERVING OUR SENIORS

Serving Our Community was a meaningful social impact program that provided opportunities for students to give back to their community. In 2024 we integrated this program with our food studies assessment, where students cooked roast lunches and pudding desserts for our Communities at Work Seniors social groups. The seniors were delighted with the result and immensely enjoyed sitting and engaging with the students in conversation.



REFURBISHING FACILITIES

Our Kambah Campus was further enhanced through:

- **Refurbishment of our outdoor multipurpose court** – thanks to the Snow Foundation. This provided a much needed ‘uplift’ to the physical activity options to young people.
- **Refurbishment of ‘Bosco’s Barn’** – thanks to ICON Water. In 2025, Bosco’s will become a café space, providing authentic learning opportunities for students as they serve barista-made coffee, and café-style food to school visitors.

DEVELOPING HEALTHY HABITS

Cooking, gardening, and nutrition are a key focus at Galilee School. The ACT Nutrition Support Service FEED program was a great way for our Year 10 students to engage with food in a healthy way, whilst learning a range of kitchen skills. FEED provides fun hands-on food exposure experiences to help young people who experience atypical eating behaviors to build a healthy relationship with food.

HORSES HELPING HUMANS

We partnered with Pegasus Riding for the Disabled for a pilot of their innovative *Horses Helping Humans* program, using horses to help students learn effective communication and body language skills to better understand the impact of their emotions. Over three sessions, students guided horses without words, building self-confidence, communication, emotional control, respect and trust for others. These skills are essential for positive relationships and contributing to the community.



CREATING THROUGH VISUAL ARTS

Students in Years 7–9 explored colour theory and the influence of advertising and popular culture on Pop Art. They created humorous and bright papier mache sculptures and paintings of fast-food items. Year 10 students investigated how artists employ symbols in their artmaking and created ceramic windchimes and painted personalised symbolic imagery onto skateboards and canvases.



DEVELOPING CRITICAL THINKING

In our Science, Technology, Engineering and Maths (STEM) program students designed and produced practical woodworking projects and applied their knowledge to battery and solar powered cars and soccer bots. Through these hands-on experiences, our students developed valuable skills in creativity, problem-solving abilities, and teamwork.

CONNECTING WITH OUR COMMUNITY

Building connections and knowledge within our school community is an important part of supporting students and their families to achieve success.

Community Connection Fridays

On Friday mornings we brought community support services to our Holder campus to make it easier for families to access the help they needed in a welcoming and non-judgmental space. Topics included health, financial concerns, family dynamics and conflict resolution, and legal challenges.

In The Know

Our ongoing information sessions provided parents and carers with advice on better understanding and dealing with contemporary challenges affecting their young people. In 2024 topics included online safety, supporting anxiety, gaming habits, resolving conflict and digital distractions.

Coffee and Conversation

On Tuesday mornings our Family and Community Engagement Officer invited families and carers to join her at a local café to meet other families and carers and learn more about Galilee School in a friendly, casual setting.



DEVELOPING TECHNICAL SKILLS

Our college timber students learned about industry practices, processes and procedures, and concepts such as technical information, materials, sustainability, ethics, equipment and work health & safety (WHS).

Throughout the year our students participated in research tasks on risk assessment and design principles and completed practical woodwork projects such as coffee tables and display drawers. These experiences not only strengthened our students' technical abilities but also encouraged creativity, problem-solving, and confidence in their craftsmanship.

BUILDING NEW PARTNERSHIPS

We are so grateful for the many partnerships we have with other organisations supporting youth in the ACT and surrounding regions (see p20). For instance:

The Junction Youth Health Service

In 2024 we entered into a partnership agreement with The Junction Youth Health Service for their mobile van to come to Galilee School. This service provides bulk-billed health care to students who find it challenging to access general medical care in the community. Thanks to Anglicare NSW South, NSW West & ACT.



CELEBRATING FIRST NATIONS PEOPLE

Working together, our Year 7-9 students created a stunning patchwork mural for Reconciliation Week, with every student contributing at least one portion. This now hangs prominently in the main learning space at the Kambah campus for all to see and admire.

Every Monday morning at our Kambah Campus our flag raising ceremony includes an acknowledgment of country; encouraging our students to reflect on their place in history, those that have come before them and the legacy they will leave for those that follow.

SOUTH CANBERRA COMMUNITY MARKETS

In November we partnered with Lions Youth Haven to set up the monthly South Canberra Community Markets - an opportunity to raise funds and awareness for the missions of both organisations.

This initiative has been very successful, averaging 60 stallholders and around 1000 visitors each market, and offering live music, diverse street food, and family-friendly farm activities.

In 2025 we hope to use the refurbished Bosco's Barn as a café venue for visitors, with food made by our hospitality students.



25TH ANNIVERSARY HIGHLIGHTS

Throughout 2024 we celebrated our 25-year journey of transforming the lives of Canberra's at risk and vulnerable young people as a registered school.

Thanks to Lions Youth Haven, who provides the land on which the school sits, "from little things, big things grew". In 1999 the Galilee Day Program, to educate foster care teenagers, became a registered independent school. Over the next 25 years, we collaborated with many valued community partners to grow the school into the unique place it is today.

25TH ANNIVERSARY PARTY

On 12 September we held two events to officially celebrate our anniversary. The first event was for students, full of fun, festivities and a visit from the Canberra Reptile Zoo.

The second event was more formal, with current and former students, staff, Board members and supporters invited to join us. We were privileged to hear from three former students who shared their experiences of the crucial impact the school had made on their lives. One student, Rory, summed it up with her powerful statement that moved all guests:

"Thanks to Galilee School, I went from an anxious, homeless, mute teenager to the 20-year-old graduate, in a happy home, confidently speaking in front of you all today. In short, I'm not only alive because of Galilee, but truly living."



COMMEMORATIVE GARDEN

We started creating a Commemorative Garden to be a unique and lasting tribute to celebrate the school's foundation, our impact, and the remarkable individuals and organisations whose contributions have been instrumental in shaping the school's journey.

INAUGURAL OPEN DAY

We held our inaugural Galilee School Open Day in June at the Kambah Campus to invite prospective families, students, staff and donors to see our wonderful resource and show the community how we're different to mainstream schools and what makes us so special. It was a great success, with over 100 people attending.



RISING FROM THE ASHES

Extract from a 2005 school newsletter article by Craig Webber, Founding Director

With sunken hearts we looked at the smoking, twisted ruins and wondered "How are we ever going to replace this?"

On 18 January 2003, the bushfire that swept through Canberra totally destroyed the School's main building and all equipment, resources and most administration records.

With sunken hearts we looked at the smoking, twisted ruins and wondered "How are we ever going to replace this? What will become of the School and all the programs operating here...?" It was gut-wrenching.

But we were completely overwhelmed with the generosity of the Canberra community.

Over 90 agencies, individuals and businesses rallied behind the School and gave us the momentum to keep our programs running for the young people we support.

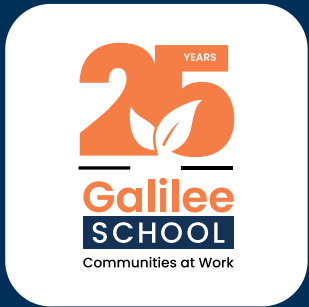
A strong sense of community spirit has been evoked, and the true philosophies of Galilee have been reinforced. The network of friendship and support is far wider than we perceived.

For the next two and a half years the School operated in a temporary building on-site supplied by the Australian Government.

Thanks to the Australian and ACT Governments' funding of \$475,000, and the Rotary Club's \$100,000 fundraiser to meet the shortfall (plus other community donations), the School was rebuilt and officially reopened in 2005.

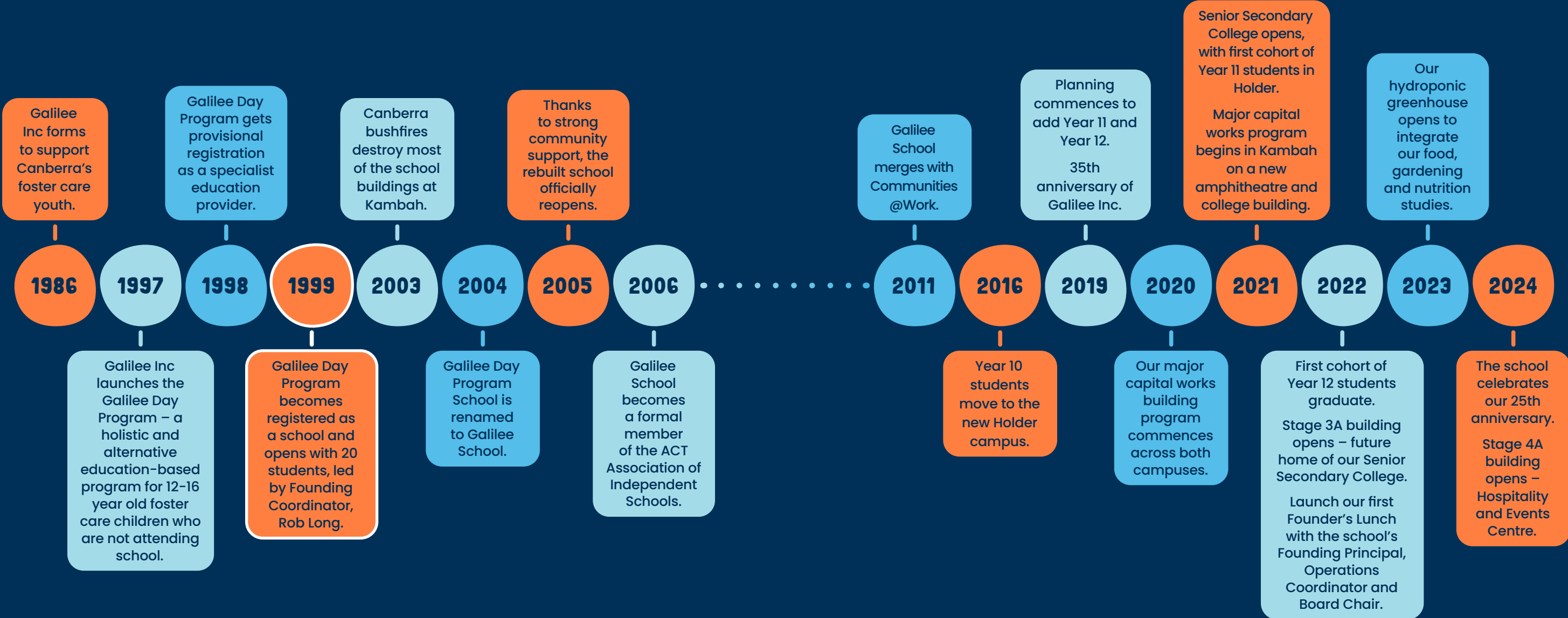
Our challenge now: to use this new facility as well as we can, for the benefit of young people now and in the future. Because that's the real story.

“ Together, over these past decades, we have worked with one focus: to enable the young people of Canberra, who are doing it tough, to have a pathway to a more positive future. To extend hope. ”
– Craig Webber, Founding Director



25 YEARS - OUR JOURNEY

In 1986, a group of people concerned about Canberra’s disadvantaged and vulnerable youth, got together and formally registered themselves as Galilee Inc. The next year, with Founding Chair Ian McTaggart, they began the Family Placement Scheme for foster care youth. This was their main program for the next 20 years and the birth of what would eventually become Galilee School.



VOCATIONAL LEARNING

Vocational learning is a critical and significant component of Galilee School's educational framework, helping students build the skills and confidence they need for future success. It includes hands-on learning, career education, and transition planning to support each student's individual path.

- **Hands-on learning** helps students write resumes, explore career options, apply for jobs, and obtain Working with Vulnerable People Cards. Ten students completed work placements. Some went on to secure School-based Apprenticeships (ASbAs), with one moving into a full-time apprenticeship.
- **Career education** helps students reflect on their interests, strengths, and goals. They explore job options, learn about the labour market, and make connections between their skills and future careers.
- **Transition planning** supports students through every stage—entry, progression, and graduation—focusing on building resilience and independence to prepare them for life beyond school.



OUR IMPACT

Our efforts in setting up vocational learning opportunities resulted in meaningful outcomes, including:

- Engaging ten Year 10-12 students in **work experience opportunities** in industries like hospitality, heavy diesel mechanics, retail, construction and tourism – even a cattle station.
- Enrolling 8 students in **Australian School-based Apprenticeships**.
- Supporting 40 students to obtain **industry-standard certifications** in Construction Industry Whitecard, Asbestos Awareness, and Silica Awareness.
- Securing a **full-time apprenticeship** for a student through work experience.
- Supporting 11 College students to complete their **Responsible Service of Alcohol** training.
- Developing students' understanding of how **establishing support networks** can be beneficial to their mental, emotional and professional growth.

We are incredibly proud of our students' achievements and look forward to seeing them grow and succeed in the years to come.

We are also very grateful to the many industry partners that have worked with Galilee School and our students in delivering these and the many other positive learning opportunities to our students.



END OF YEAR HIGHLIGHTS

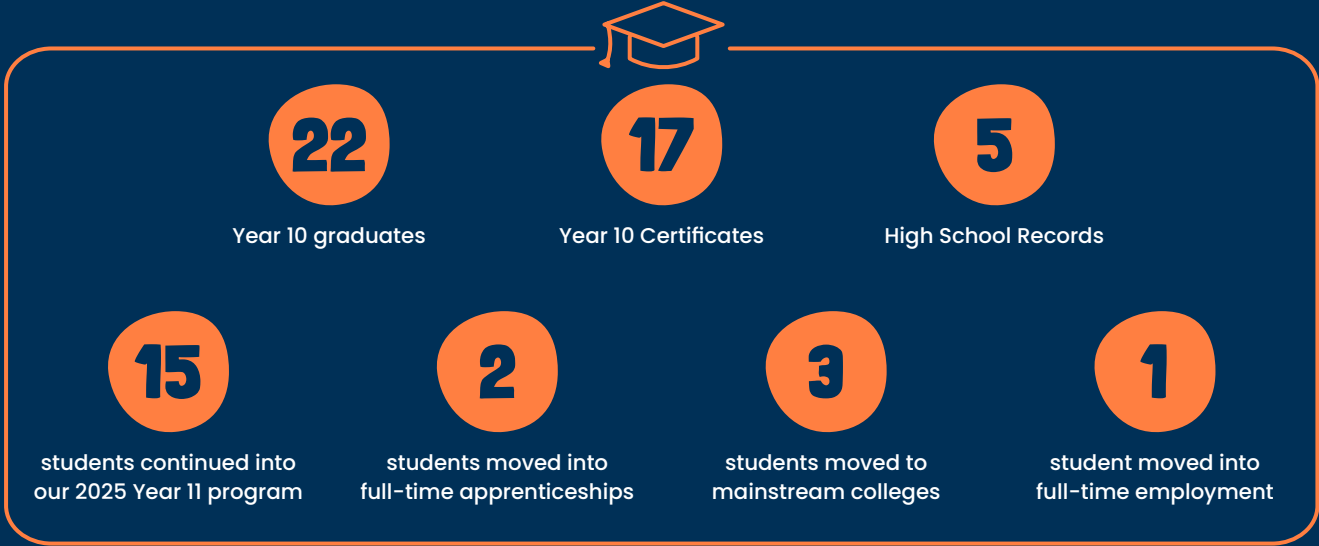
The end of year events at Galilee School celebrate the success of the whole school across the year and allow us to acknowledge students for their hard work, growth, and dedication academically, socially and emotionally. For our Year 10 and Year 12 graduates, we're inspired by their courage, and success, and privileged to have been part of their life journey. We wish our graduates all the very best in the next step of their journey.

YEAR 10

“Year 10 wasn't just about achieving academic milestones – it was about discovering resilience, courage, and the strength of community. Whether it was mastering the technical skills in the White Card course or simply showing up every day with a willingness to grow, each of you demonstrated a level of maturity and determination that was truly inspiring. (Aileen, Year 10 Coordinator)”



After Graduation

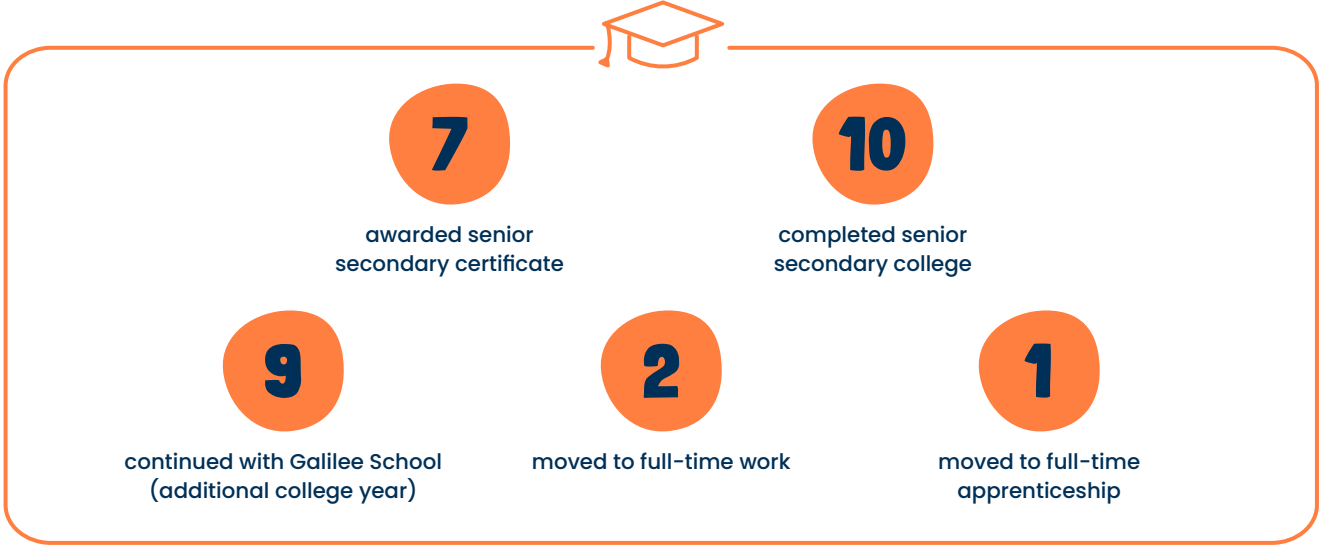


YEAR 12

“This year at our college we've seen incredible success – not just in academics, but in building a community full of growth, connection and care. Our greatest achievement was attendance: more students showed up this year, ready to learn and grow, than ever before. We also had the highest number of students step up into work experience and thrive. We didn't just achieve milestones – we built memories, connections and a culture that will carry us forward. (Natasha, Senior Secondary College Coordinator)”



After Graduation



GRADUATION SUPPORTERS

We're grateful to all the organisations who provided free or discounted services to our Year 10 and Year 12 graduates to enhance their special night, including:

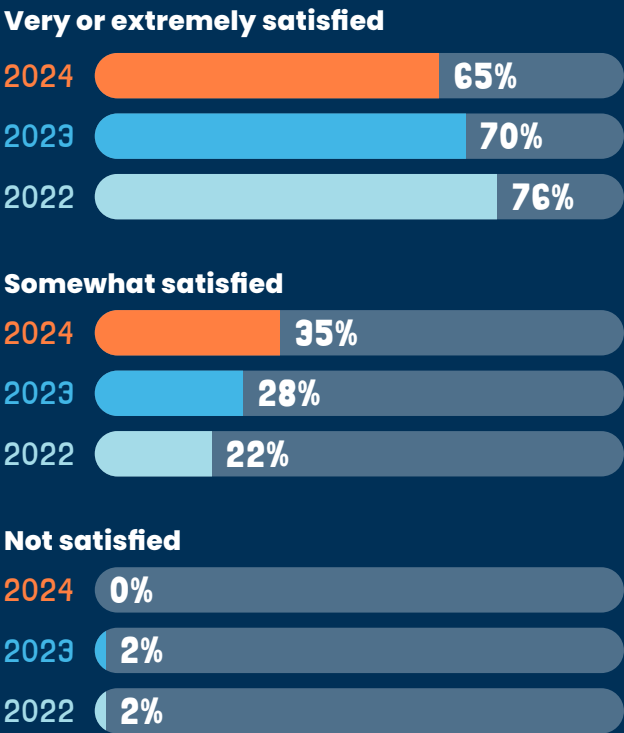
- Canberra Southern Cross Club – Year 10 graduation venue
- National Gallery of Australia – Year 12 graduation venue
- Operation Formalwear – Free formal clothing for students
- Best Dressed Store – Free graduation outfits
- Ebony May Bakes – Year 10 cupcakes
- Balloons By Bridget – Year 10 centrepieces and balloon backdrop
- Ruth Zanker – Year 12 floral arrangements
- Sweet Dreams Desserts – Year 12 cupcakes



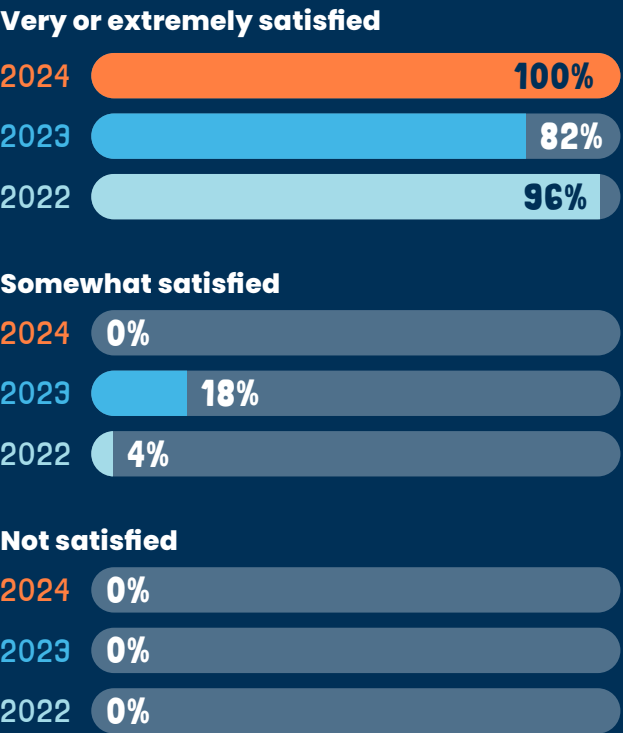
SATISFACTION SURVEYS

Each year Galilee School conducts a survey of parents/carers, students and staff to understand how the school can better support the young people attending the school. It is an important part of the partnership that we seek to have with every young person and their families.

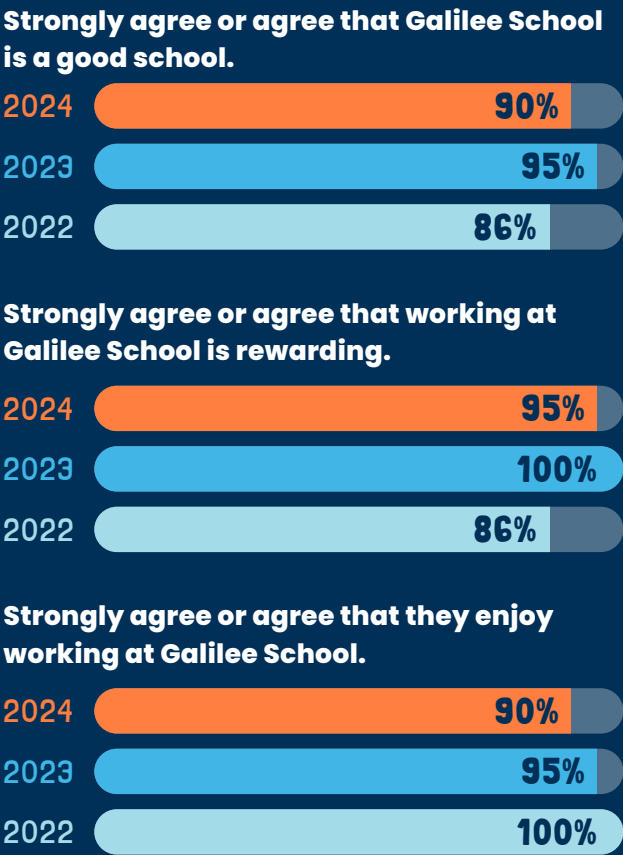
STUDENT SATISFACTION



PARENT SATISFACTION



STAFF SATISFACTION



“Thank you for believing in me, even when I didn’t believe in myself. Your patience, guidance, and passion for what you do have inspired me every day. You’ve helped me grow into the person I am today, and for that, I am so forever grateful”

- Year 12 Student

“Galilee School has allowed my child to grow and his personality to shine through again. We cannot express enough how much this means to us and how grateful we are to everyone at the school.”

- Parent

“Galilee is a very special place to work. It gives you as a staff member the opportunity to give the young people experiences and support they have not otherwise had, and this allows them to see education and life in general differently, and for the better.”

- Justin, Year 7-9 Year Coordinator

“Galilee School understands that success looks different for everyone, and students are supported to explore what it means for them. Watching students grow in confidence and gain a deeper understanding of their own skills and potential makes working at Galilee an absolute pleasure.”

- Bella, Vocational Coordinator

OUR PARTNERS & SUPPORTERS

Galilee School deeply values our partnerships with local businesses, community organisations, and the Australian and ACT Governments. Thank you to everyone who has provided invaluable funds, materials, time, and services throughout the year to enable us to continue our important mission to deliver education services to vulnerable youth. During 2024 our supporters included:

- A & P Leemhuis Builders
- ACT Board of Senior Secondary Studies (BSSS)
- ACT Education Directorate
- ACT Health
- ACT Nutrition Support Service
- Academy of Entrepreneurs
- Anglicare NSW South, NSW West & ACT
- Association of Independent Schools of the ACT
- Australian Defence Force
- Australian Government
- Australian Training Company
- Balloons by Bridget
- Care Financial Counselling Service
- Canberra Seed Savers
- Canberra Southern Cross Club
- Canberra Toyota
- Capital Guitar Repairs
- Colin Greef
- Conflict Resolution Centre
- Creative Safety Initiatives
- David Smith MP, Member for Bean
- Dogs Connect
- Ebony May Bakes
- ExHale People
- Food Ladder
- Fusion City Church
- Generation Next
- GivIT
- Hands Across Canberra
- ICON Water
- Independent Schools Australia
- Legal Aid
- Lions Youth Haven
- MensLink
- Meridian ACT
- MIEACT
- Mill House Ventures Ltd
- Munns Sly Moore Architects
- National Gallery of Australia
- Operation Formalwear
- Outward Bound Australia
- OzHarvest
- Parbery Consulting
- Pegasus Riding for the Disabled
- Purdon Associates
- Rainbow Paws
- Shev Group
- Snedden Hall and Gallup Lawyers
- Snow Foundation
- Stephanie Alexander Kitchen Garden Foundation
- St John Ambulance
- Sweet Dreams Desserts
- Synergy Group
- The Duke of Edinburgh's International Award
- The Street Uni
- The Root Cause
- Total Project Construction
- Wilde & Woollard Consultants
- Youth Law Centre

SUPPORT OUR SCHOOL

Please visit our website or scan this QR code to donate: commsatwork.org/get-involved



SUPPORTER STORIES

DONATING SERVICE – FUSION CITY CHURCH

Volunteers from Fusion City Church helped give our Kambah campus a gardening facelift for their annual Serve Day. Creating a peaceful and welcoming space for our young people and their families and carers is an important element in demonstrating respect. Over 75 church volunteers helped out at our school and at other organisations, engaging in gardening, planting trees, making gift bags, and serving breakfast to university students.



DONATING RESOURCES – COLIN GREEF

The opportunity for young people to safely explore how music can support their educational journey, and their social and emotional worlds is a powerful area for our school. We were therefore very grateful to Colin Greef for generously donating a number of refurbished guitars to help our music program grow. Colin also does much impactful work in our community supporting our veterans through music.



DONATING MONEY – HANDS ACROSS CANBERRA

Hands Across Canberra supports Galilee School each year with financial donations through its annual Canberra Day Appeal. During 2024 HAC contributed to the refurbishment of Bosco's Barn into a future 'al fresco' dining, entertainment and learning space that will deliver great learning opportunities for students and complement the new food studies and hospitality building.

DONATING KNOWLEDGE – THE ROOT CAUSE

Numerous organisations generously share their knowledge with our students on issues such as nutrition, mental health, and relationships. The Root Cause, for instance, ran an educational program to teach students about healthy food choices. These sessions complemented other workshops by Food Ladder, Canberra Seed Savers, OzHarvest and The Stephanie Alexander Kitchen Garden Foundation, enriching our students' learning about food studies, gardening and nutrition.

SUPPORTER OPPORTUNITIES

Galilee School changes lives.

We give students who struggle in mainstream schools a second – and often their best – chance to succeed. We help them feel safe, heard, and ready to build futures they never thought possible. Our students find not just a school – but a community that believes in them.

But this takes more than just providing education. We provide food, school supplies, transport, small class sizes, and unique wrap-around care that focuses on developing students' educational, emotional, social and career needs.

This life-changing work is expensive – and only possible with the support of the Canberra community. Together, we can open doors, inspire hope, and help students build confidence and skills to follow their dreams.

We encourage you to be part of their life-changing journey through our sponsorship and fundraising opportunities.

SPONSORSHIP

Our inaugural annual Galilee School Black Friday Ball, scheduled for 28 November 2025, will bring together our community to celebrate and support the transformative work of Galilee School in empowering young minds and strengthening education in Canberra.

We invite you to showcase your organisation's commitment to youth development and education by becoming a sponsor of the Black Friday Ball.

By supporting the Ball, you're sending a powerful message. You're telling a young person "I believe in you. You matter".



FUNDRAISING

In November 2024 Galilee School partnered with Lions Youth Haven at Westwood Farm to launch new monthly community markets to provide a new fundraising avenue to support our joint missions to help disadvantaged youth. We raise money through gold coin entry donations, stallholder fees, marquee hire, charity art exhibitions and raffles. We always welcome new stallholders and donated raffle prizes.

Some stallholders even regularly donate a portion of their profits each market to Galilee School.



APPEALS

Canberra Day Appeal

Every March Galilee School participates in the Hands Across Canberra 'Canberra Day Appeal'. Each year we focus on raising at least \$10,000 towards an educational resource for the school. These have included refurbishment of Bosco's Barn for our hospitality students, and the purchase of trade tools and a trailer for our Farm Skills Program. Please consider supporting the school in the next Canberra Day Appeal.

Christmas Appeal

You might like to consider hosting a Christmas Appeal giving tree and invite your clients or employees to collect financial donations or educational resources for our students. The Canberra Southern Cross Club, for instance, held a Christmas Appeal drive for school stationery items for our students to kickstart their 2025 school year.



FINANCIAL DONATIONS

Galilee School gratefully welcomes financial donations throughout the year from the local community to assist us in purchasing educational resources and equipment for our students.

You can make a donation through the Communities at Work website (search for 'Donate Money') or scan this QR code.



OUR STAFF

STAFF DATA

Workforce Composition



Qualifications



ACKNOWLEDGING OUR QUALITY STAFF

We are so proud to have a strong team of dedicated educators leading our school. Some were honoured by the education sector in 2024.

AWARD	NAME	POSITION
Excellence in Educational Leadership (ACEL – Australian Council of Educational Leaders)	Lisa Hivers	Head of Teaching and Learning
ACEL ACT Fellowship	Tim McNevin	Principal
Education 2.0 Conference in Dubai – Educational Leadership Award	Tim McNevin	Principal
Finalist, Teaching Giant (ACT Government's World Teacher's Day Awards)	Damian Roberts	Design and Technology Teacher

OUR STUDENTS

STUDENT ENROLMENT AND ATTENDANCE FIGURES

Enrolments

	2024	2023	2022
Year 7	7	5	5
Year 8	11	16	12
Year 9	27	21	20
Year 10	29	29	20
Year 11	35	26	27
Year 12	18	26	25
TOTAL*	127	123	109

*Total across the entire year.

My School Enrolments

103 total enrolments in 2024 (as at census time).

Student Attendance

	2024	2023	2022
Year 7	56%	53%	37%
Year 8	43%	50%	44%
Year 9	42%	54%	61%
Year 10	51%	50%	44%
Year 11	43%	52%	41%
Year 12	41%	30%	42%

NAPLAN

In 2024, two students participated in NAPLAN assessments at Galilee School.

Participation in NAPLAN each year is encouraged, however the majority of our Year 7 and Year 9 parents elect to have their young person not participate.

MANAGING NON-ATTENDANCE

Our approach to managing non-attendance is outlined in the *Galilee School Student Attendance Policy* (a copy of which is available on our website).

This policy specifically addresses the following requirements:

- recording and monitoring attendance and absences;
- encouraging school attendance and managing non-attendance; and
- archiving enrolment and attendance records.

In addition, Galilee School is required to be aware of the legal obligations regarding attendance, as stipulated in the ACT Education Act ss 99, 100 and 102.

We satisfy these obligations by:

- keeping a register of attendances;
- ensuring that a record is made of the attendance or non-attendance of each student at the school on every day when the school is open for attendance; and
- establishing procedures to encourage students to attend school regularly and to help parents/carers encourage their children to attend school regularly.

GALILEE SCHOOL

EDUCATION COMMITTEE

The Communities at Work Board is the Approved Authority for Galilee School. The Galilee School Education Committee reports to the Board.

PRIMARY OBJECTIVES

- To ensure that the Board is well informed and able to make strategic decisions concerning future direction and any issues that they are responsible for in relation to Communities at Work Educational Services.
- To advise the Board on measures necessary to meet the Board’s legislative responsibilities.
- To advise the Board on strategic initiatives, opportunities, policies and approaches necessary for the ongoing achievement of strategic priorities/objectives of the Communities at Work Educational Services.
- To monitor, advise and provide assurance to the Board on the appropriateness, relevance and impact of the Educational Services.

In pursuit of these objectives the Committee will:

- Shape and monitor the strategic direction, opportunities, annual business plans and review of the Educational Services across Communities at Work, in line with the organisational strategy.
- Determine strategic principles for education, including curriculum and pedagogy, and promote the development of excellence in learning and teaching at Communities at Work.
- Consider the strategic and commercial rationale for strategic initiatives and major change in curriculum mix, teaching methods, and courses.
- Keep abreast of developments in the external environment including policy, trends, best practice, and innovations related to education.

2024 COMMITTEE MEMBERS



Joanne Garrison
Chair & Communities
at Work Board Member



Karen Curtis
Member, Communities
at Work Board



Michelle Colefax
CEO, Communities at
Work



Kellie Stewart
Director, Children’s
Services



Chloe Brewer
Senior Manager,
Centre of Professional
Learning and Education



Tim McNevin
Principal, Galilee
School

STATEMENT OF COMPLIANCE

Statement of Compliance with the ACT Government’s Registration Standards for Non-government Schools.

In 2024 Galilee School was advised that it was one of the schools that would be participating in the 2024 Annual Registration Review Program. This Program was one element undertaken by the Non-government Schools section of the ACT Education Directorate.

The Annual Registration Review Program was one element of the changes made to the ACT Education Act in 2022. The amended Act and Regulations came into effect on 20 December 2022. From 20 December 2022, the amended legislation became known as the Education Act 2004 (the Act) and the amended regulations known as the Education Regulations 2005 (the Regulations).

The Annual Registration Review process seeks to ensure that the **Registration Standards** are met by participating schools.

In 2024, the following standards were the subject of the review of Galilee School:

- Schedule 2 Part 2.1 (2.3) Governance Structure
- Schedule 2 Part 2.1 (2.5) Policies and Procedures
- Schedule 2 Part 2.3 (2.17) Student Movement Register (SMR)

On 12 August 2024, Galilee School was advised that upon review of the submitted evidence, the Office of Non-government Schools was satisfied that Galilee School had met the standards to complete the Annual Registration Review Program.

Throughout 2024, the Board of Communities at Work, through the Education Committee, continued its work to align the policies and procedures of the school with the requirements of the ACT Education Act and other relevant legislation. Notably:

- Our partnering organisation CompliSpace provided advice on necessary updates to school policies and procedures – these were actioned.
- We engaged in the ongoing process of review and consultation of school policies.
- The school’s policies have been reviewed relevant to compliance with the National Childhood Principles and Safeguarding legislation and this review and updating is being aligned with similar effort across the whole of Communities at Work.

TAYLAH'S STORY



BY HER SISTER JADE

Taylah's story shows that no matter how tough life gets, you can always turn things around and succeed.

Even though she had a loving home, Taylah chose to do the wrong thing and went through some really tough times. She hung out with the wrong crowd and didn't want our help. I was really worried that she wouldn't make it.

Then she made a big mistake. Faced with jail or joining a PCYC court support program, Taylah chose to change.

After the program PCYC referred her to Galilee School, where she began her journey to a better future.

At first, Taylah struggled. But she kept going. While in Year 10 she joined the Australian Training Company's *Women in Construction* program. She learned new skills like welding, plumbing, and cabinet making, and passed courses like her White Card, First Aid, and Responsible Service of Alcohol.

In Year 11 Taylah began leaving her past behind, worked hard and won a scholarship and casual job at PCYC. During Year 12 she successfully balanced school with her job at PCYC, earning many academic awards, including the highest achieving Year 12 student. I was so proud of her!!

After finishing school, Taylah got a full-time job with PCYC and now plans to study youth work to help others like her. Galilee gave her the support and confidence she needed to believe in herself. Now she's ready to help others do the same.

ABOUT COMMUNITIES AT WORK

Communities at Work is one of Canberra's largest not-for-profit community organisations. We provide a range of high quality community-focused and person-centered complementary services that support positive educational outcomes for children and young people, assist in alleviating hardship, enhance the quality of life, and lead to positive social change.

WHAT WE DO

Children's Services



We educate children across the Canberra region through our Early Education and Care Centres, Out of School Hours Care Services, School Holiday Programs, and Family Day Care program.

Community Services



We support the most vulnerable in our community with food, crisis support and more. We also provide social and life skills support to people living with disabilities, and develop positive community-building projects to strengthen communities.

Galilee School



We inspire young people to realise their full potential and find an alternative path to success in a positive learning environment designed for disengaged and vulnerable youth.

Professional Training and Qualifications



We offer nationally recognised early childhood education and care qualifications and ongoing professional development training through our registered training organisation, Cple (Centre of Professional Learning and Education) (RTO 88148).

FINANCIAL STATEMENTS

Copies of the full audited Financial Reports for Galilee School are available on the [Communities at Work website](#) or from the School Principal on request.



Kambah Campus

244 Kambah Pool Road, Kambah ACT 2902

Holder Campus

172 Dixon Drive, Holder ACT 2611

Ph: (02) 6293 6314

Communities at Work

(02) 6293 6500

commsatwork.org

